



# ALTERNATIVA A - OPEN PLAN

  
**1,959 sqm**  
 Net Area

  
**206**  
 Seats

**204**  
 Open Space

**0**  
 Offices

**7**  
 Conf Room

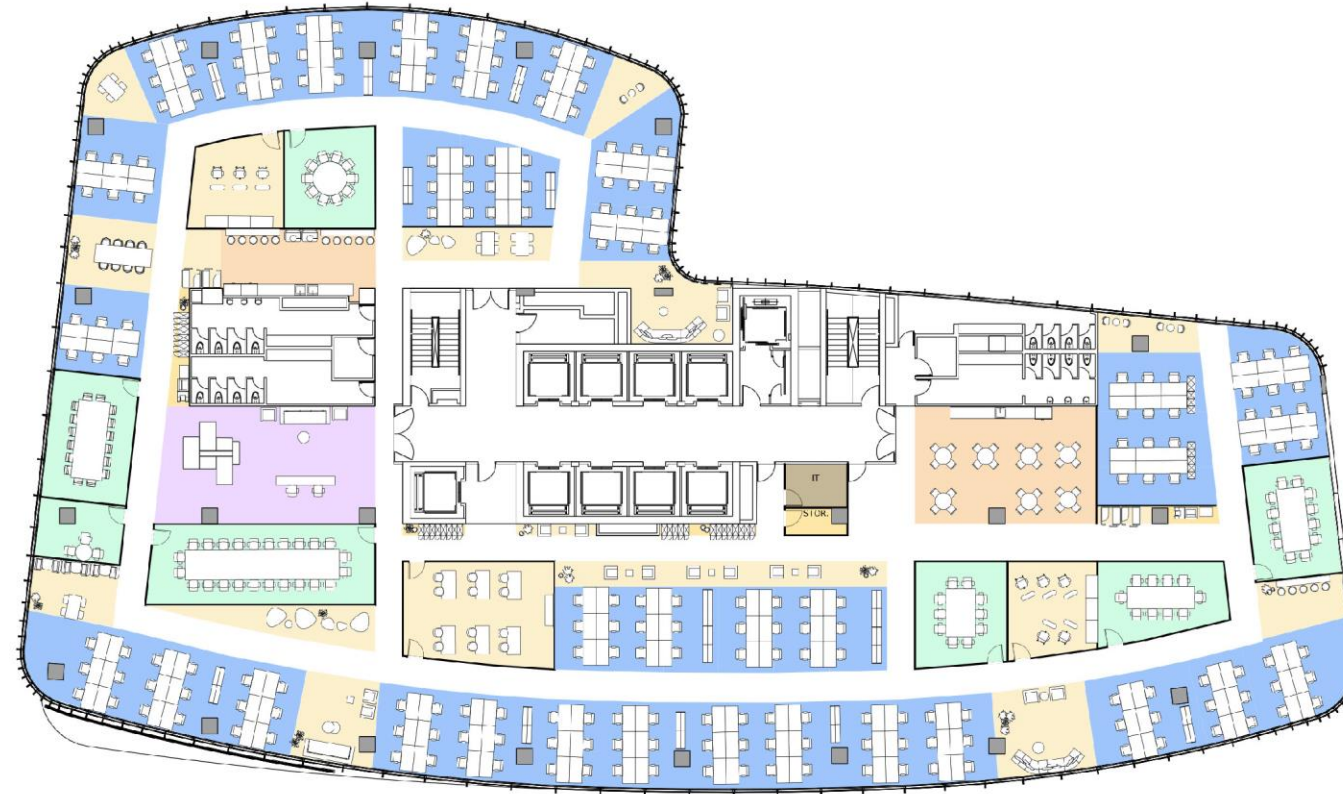
**9.51**  
 Density sqm/person

Daylight  78%

Privacy  0%

Efficiency  80%

† Average



- Office
- Reception
- Pantry
- Executive Office
- Conf Room
- IT Room
- Open Space
- Amenities
- Comfort Zone

# ALTERNATIVA B - MIX

  
**1,959 sqm**  
 Net Area

  
**149**  
 Seats

**114**  
 Open Space

**33**  
 Offices

**6**  
 Conf Room

**13.15**  
 Density sqm/person

Daylight  75%

Privacy  22%

Efficiency  79%

‡ Average



-  Office
-  Reception
-  Pantry
-  Executive Office
-  Conf Room
-  IT Room
-  Open Space
-  Amenities
-  Comfort Zone

# ALTERNATIVA C - OFFICES

  
**1,959 sqm**  
 Net Area

  
**72**  
 Seats

**0**  
 Open Space

**70**  
 Offices

**6**  
 Conf Room

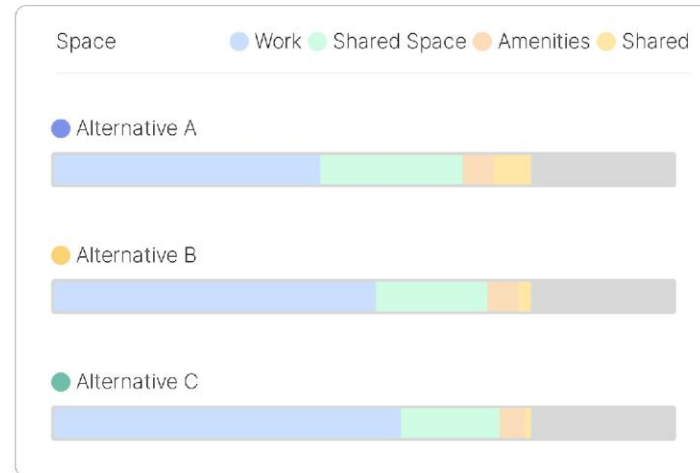
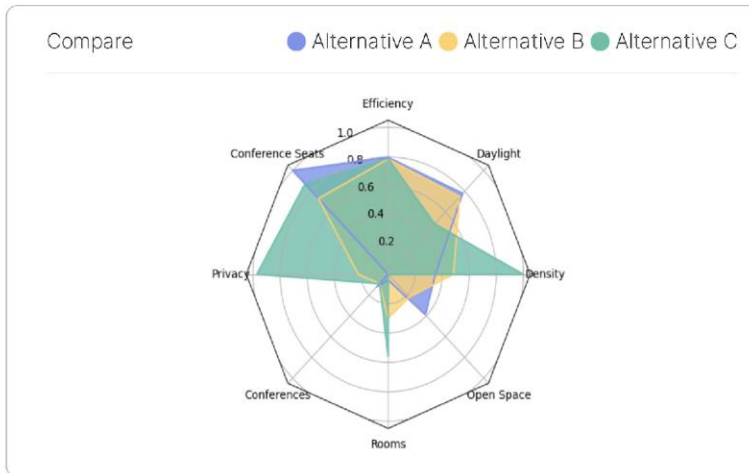
**27.21**  
 Density sqm/person



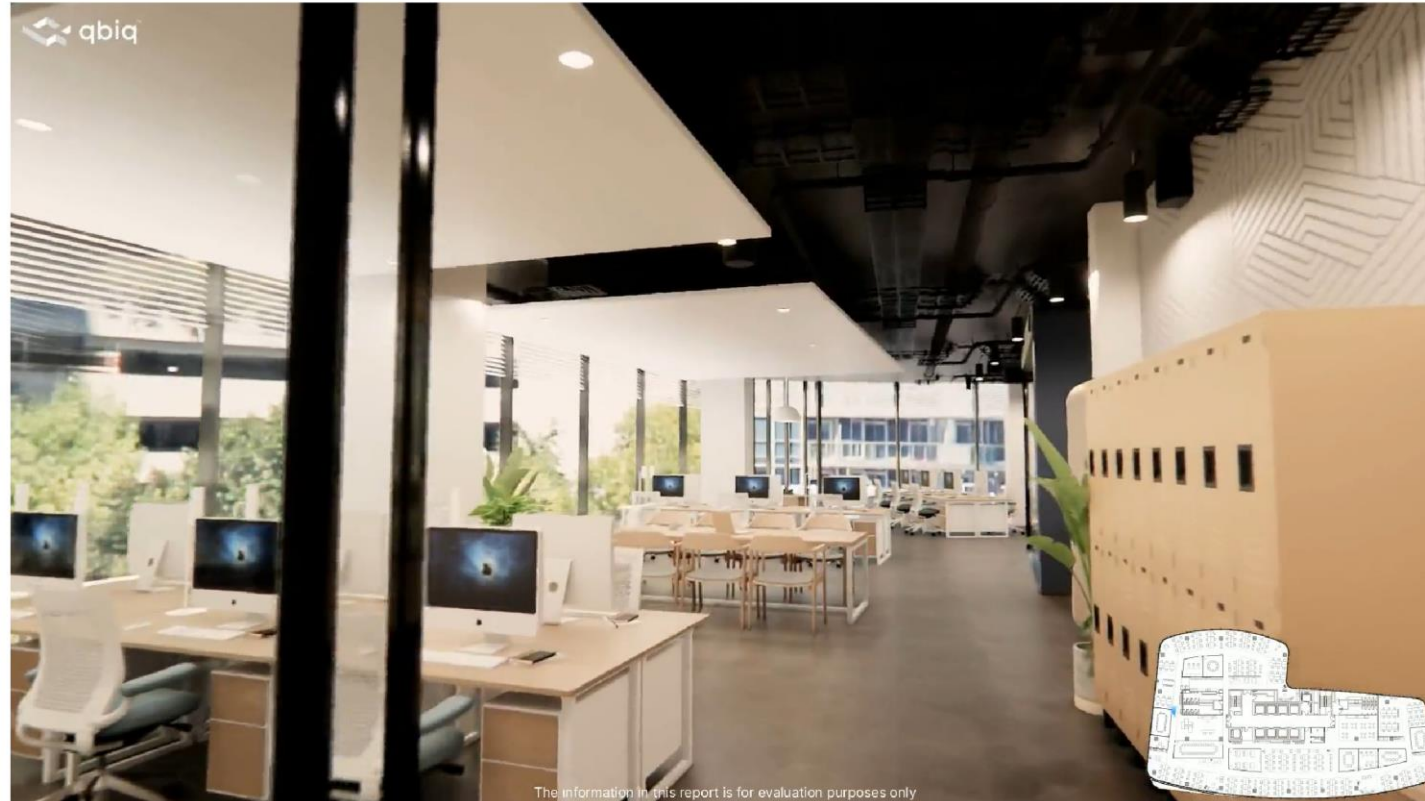
-  Office
-  Reception
-  Pantry
-  Executive Office
-  Conf Room
-  IT Room
-  Open Space
-  Amenities
-  Comfort Zone

# ANÁLISIS COMPARATIVO

	Alternative A	Alternative B	Alternative C
<b>Seats</b>	206	149	72
<b>Open Space</b>	204	114	0
<b>Offices</b>	0	33	70
<b>Conf Room</b>	7	6	6
<b>Density sqm/person</b>	9.51	13.15	27.21
<b>Daylight</b>	78%	75%	49%
<b>Privacy</b>	0%	22%	97%



# VIDEO 3D



[Edificio Pardo y Aliaga on Vimeo](#)